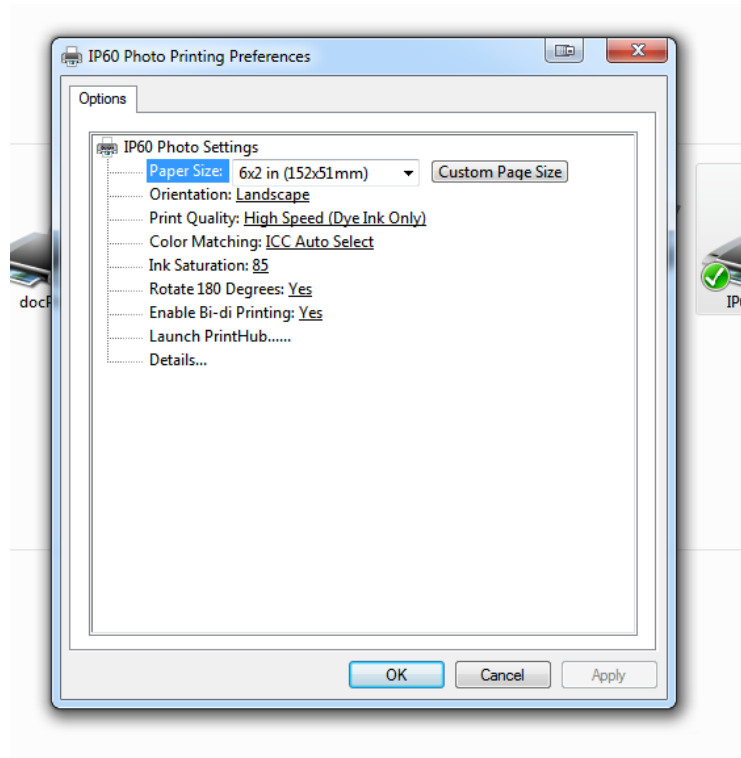
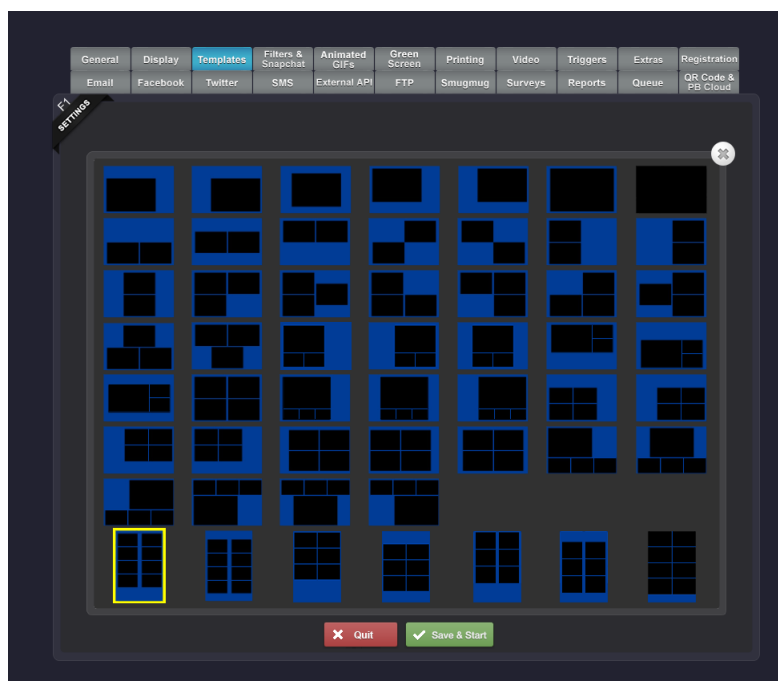


## How to setup and print single 2x6 photo strips in SocialBooth

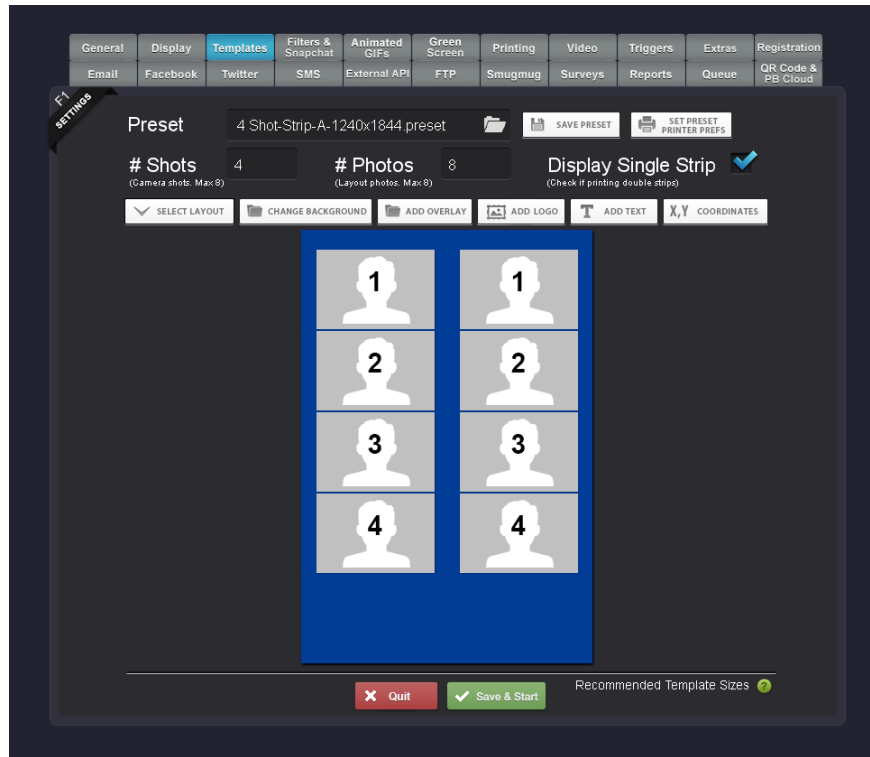
Before opening SocialBooth, go to your Windows printers and right click on the IP60. Change the size to 6x2" and the orientation to Landscape.



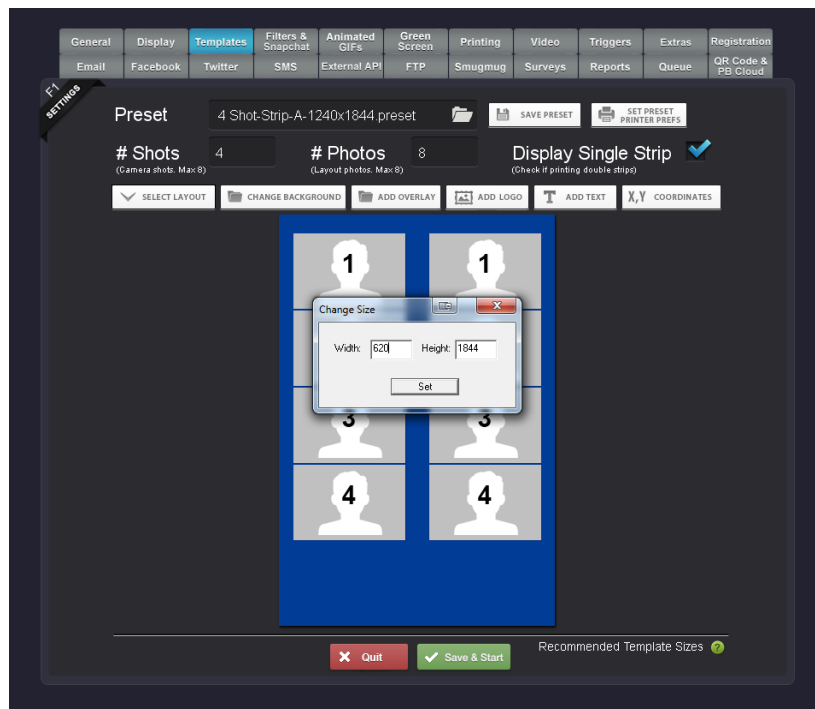
Open SocialBooth and choose the Templates tab. Choose one of the double strip templates from the bottom of the page.



Select the Display Double Strip checkbox on the template.



Click the change background button and choose Size. Change the width to half of what it is currently set at.



You should now see the background covering half the strip. Save and start the booth, you'll get just a single strip printed of the left side design.

