

Optical Disc Duplicator

User's Manual

Notices: The information in this document is subject to change without notice. NO WARRANTY OF ANY KIND IS MADE WITH REGARD TO THIS MATERIAL, INCLUDING, BUT NOT LIMITED TO, THE IMPLIED WARRANTIES OF MERCHANTABILITY AND FITNESS FOR A PARTICULAR PURPOSE. No liability is assumed for errors contained herein or for incidental or consequential damages in connection with the furnishing, performance, or use of this material. This document contains proprietary information which is protected by copyright. All rights are reserved. No part of this document may be photocopied, reproduced, or translated into another language without prior written consent.

Trademark Acknowledgments: Windows is a registered trademark of Microsoft Corporation. All other trademarks are the property of their respective owners.

Printing History

Edition 2.2, #090402

FCC Compliance Statement: This device complies with part 15 of the FCC rules. Operation is subject to the following two conditions: (1) this device may not cause harmful interference, and (2) this device must accept any interference received, including interference that may cause undesired operation.

For Users in the United States: This product is intended to be supplied by a UL Listed Direct Plug-In Power Supply marked "Class 2" or a UL Listed ITE Power Supply marked "LPS" with output rated 24 V dc, 2.5 A. This equipment has been tested and found to comply with the limits for a Class B digital device, pursuant to Part 15 of the FCC Rules. These limits are designed to provide reasonable protection against harmful interference in a residential installation. This equipment generates, uses, and can radiate radio frequency energy and, if not installed and used in accordance with the instructions, may cause harmful interference to radio communications. However, there is no guarantee that interference will not occur in a particular installation. If this equipment does cause harmful interference to radio or television reception, which can be determined by turning the equipment off and on, the user is encouraged to try to correct the interference by one or more of the following measures:

- Re-orient or relocate the receiving antenna.
- Increase the separation between the equipment and receiver.
- Connect the equipment into an outlet on a circuit different from that to which the receiver is connected.
- Consult the dealer or an experienced radio/TV technician for help.

Use of a shielded cable is required to comply with the Class B limits of Part 15 of the FCC Rules. You are cautioned that any changes or modifications not expressly approved in this manual could void your authority to operate and/or obtain warranty service for this equipment. This product is intended to be supplied with a UL Listed Direct Plug-In Power Supply marked "Class 2" or a UL Listed ITE Power Supply marked "LPS" with output rated of 24 V dc, 2.5 A.

For Users in Canada: This digital apparatus does not exceed the Class B limits for radio noise for digital apparatus set out on the Radio Interference Regulations of the Canadian Department of Communications. Le présent appareil numérique n'émet pas de bruits radioélectriques dépassant les limites applicables aux appareils numériques de la classe B prescrites dans le Règlement sur le brouillage radioélectrique édicté par le ministère des Communications du Canada.

CAUTION!

TO PREVENT FIRE OR SHOCK HAZARD, DO NOT EXPOSE THE UNIT TO RAIN OR MOISTURE. TO REDUCE THE RISK OF ELECTRIC SHOCK, DO NOT REMOVE EXTERIOR PANELS. NO USER-SERVICEABLE PARTS INSIDE. REFER SERVICING TO QUALIFIED SERVICE PERSONNEL. OPERATE THE UNIT WITH ONLY THE PROPER ELECTRICAL SPECIFICATIONS AS LABELED ON THE PRINTER AND AC ADAPTER.

CAUTION!

THIS PRODUCT CONTAINS A LASER DIODE OF A HIGHER CLASS THAN 1. TO ENSURE CONTINUED SAFETY, DO NOT REMOVE ANY COVERS OR ATTEMPT TO GAIN ACCESS TO THE INSIDE OF THIS PRODUCT. REFER ALL SERVICING TO QUALIFIED PERSONNEL. THE FOLLOWING LABEL APPEARS INSIDE YOUR UNIT:

CLASS 1 LASER PRODUCT
LASER KLASSE 1

CAUTION!

USE OF CONTROLS OR ADJUSTMENTS OR PERFORMANCE OF PROCEDURES OTHER THAN THOSE SPECIFIED HEREIN MAY RESULT IN HAZARDOUS RADIATION.

NOTE: *The optional DVD-R drive inside this product has laser diode(s) emitting below the limits of Class 3B.*

Table of Contents

Section 1: Getting Started	1
A. Overview of Operation	2
B. Choosing a Good Location	6
C. Unpacking and Inspection.....	6
D. Identifying the Parts	7
E. System Requirements.....	10
Section 2: Hardware and Software Set-Up and Testing	11
A. Connecting Interface Cables.....	11
B. Hardware Test and Printer Alignment	16
C. Fine Tuning the Printer Stand Alignment.....	19
D. Software Installation.....	20
E. Selecting Your Recorder Drive.....	21
F. Software Test.....	22
Section 3: Running Your First Job	27
A. Operating Screens	27
B. Overview of Recording.....	28
C. Copying an Audio CD.....	30
D. Creating Print Files	32
Section 4: Interpreting the Duplicator's LED Status Lights	33
A. Power LED	33
B. Pause LED	33
Section 5: Maintenance and Troubleshooting	34
A. Cleaning the Case	34
B. Resetting the Duplicator	34
C. SCSI Power-Down Procedure	34
D. Recording Errors	35
E. Technical Support.....	37
Section 6: Technical Specifications	38
Index	40

Interactive Feature in this PDF Document

There are interactive features that will allow you to jump to different locations within the document. Each listing in the Table of Contents is interactive. Place the cursor on either the words or the page number. A small hand with a pointing finger icon appears. Click on the line with the icon and the document will jump to that page. If you want to return to the Table of Contents, move the icon to the top of the page and click on the arrow marked TOC. Navigating through the Index is similar. Place the icon on one of the listings or page numbers, click on it, and it will move to that page. The text relating to the Index listing will appear in red. Returning to the Index can be done by clicking on the arrow marked Index.

Section 1: Getting Started

THANK YOU...

...for purchasing the Optical Disc Duplicator or Optical Disc Duplicator Plus. It is the perfect way for you to copy CDs. The Optical Disc Duplicator handles 50 discs at a time, while the Optical Disc Duplicator Plus has 100 disc capacity. You can also print directly onto disc surfaces with an optional **ink-jet or thermal printer**. A wide variety of disc formats are supported, including Audio CDs, Video CDs, data discs and more. Operation is simple and totally automatic once a job has been started.

To begin using your Duplicator, please read this manual carefully. This Operator's Manual is a complete step-by-step guide to quickly and easily setting up and beginning to copy discs with your new Duplicator.

A separate User's Guide is provided with your Duplicator that explains the operation of the Prassi PrimoPro CD or PrimoDVD Software.

NOTE ON TERMS AND CONVENTIONS:

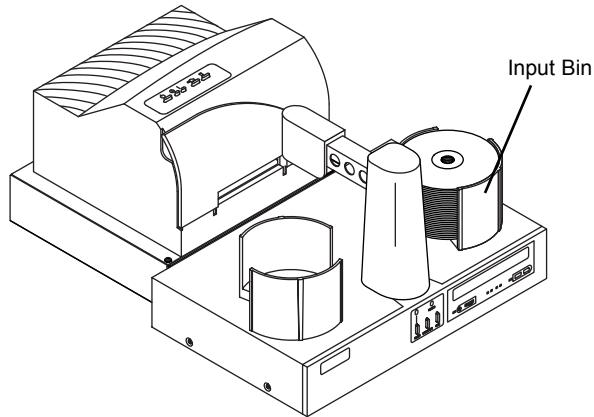
From this point forward, the following terms and conventions will apply:

1. Both the Optical Disc Duplicator and Optical Disc Duplicator Plus will be abbreviated as the Duplicator.
2. Optical discs, which can include many different types of discs including CD-Rs, CD-RWs, DVD-Rs and more are all referred to as CDs or discs. Please note that in order to copy and record DVDs, you need to have purchased the DVD-R version of the Duplicator.
3. This manual assumes that you will be attaching a printer to the Duplicator. It further assumes that you will be using the Ink-Jet CD Printer (CD Printer IV). If you are attaching a Thermal CD Printer or any other ink-jet CD printer, virtually all of the same set-up instructions are valid. In either case, you will need to consult the printers' own Operator's Manuals for details on printer operation.

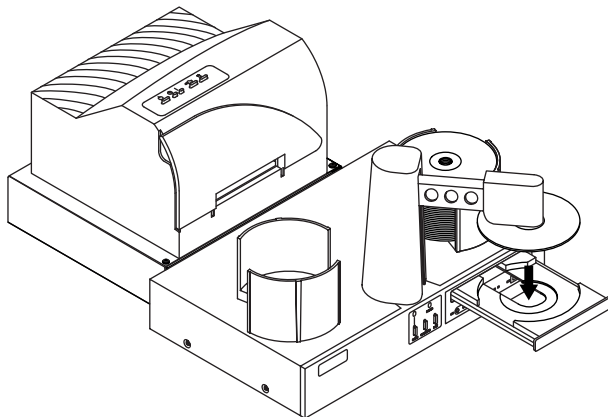
A. OVERVIEW OF OPERATION

Your new CD Duplicator is an automated, precision device intended for continuous-duty copying and printing of CDs. The following is a description of the complete process of copying and printing a CD job on your Duplicator:

1. Up to 50 blank CD-Rs may be loaded at one time into the Input Bin of the Duplicator. The Duplicator Plus will hold up to 100 discs.

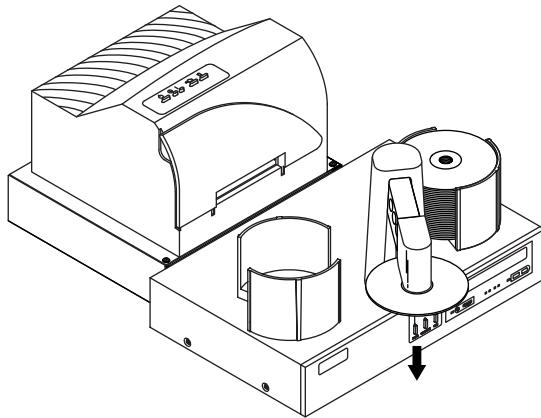


2. The Duplicator has an integrated robotic arm that "picks" discs one at a time from the Input Bin.
3. The CD Tray on the built-in, high-speed CD Recorder opens automatically and the Robotic Arm places the disc into the recorder.



4. The CD Tray on the CD Recorder automatically shuts.

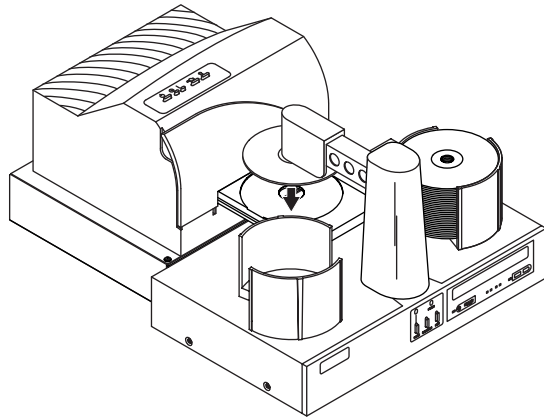
Through software control, you can perform a verification test on each CD-R disc before recording. If a disc does not pass (meaning that all or part of that disc is not recordable), the Robotic Arm picks it out of the CD Tray and sends it to the **Reject Area**, located at the front left side of the Duplicator. Rejected discs simply drop onto your table-top in this area.



Since most CD-Rs available today are of extremely high quality, you will rarely reject a disc. Nevertheless, it is good practice to verify each disc - just in case. You certainly don't want to send out a great looking disc that does not read properly in your customer's CD drive! Keep in mind that verifying each disc will add extra time to the recording process.

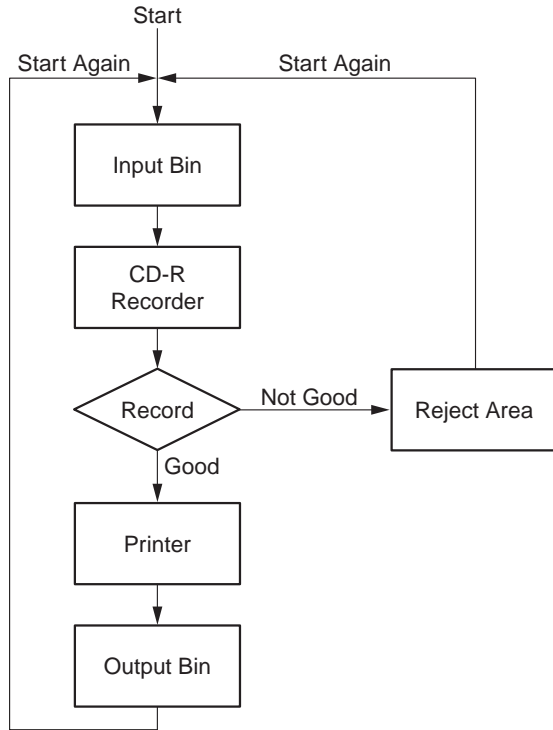
5. The CD-R is now recorded. If you were to fill up each CD with data, audio, video or music (650 MB), recording time is about 6 minutes each. Most jobs don't fill the entire CD-R, so recording time is usually less than this.

6. After recording, the CD Tray opens automatically so that the Robotic Arm can pick the CD and transport it to the optional printer. Print time varies according to which printer has been selected. Both **ink-jet and thermal printers** are available. In most cases, print time takes no more than 1 minute.



- After printing, the printer's CD Tray opens automatically and the Robotic Arm picks the CD and transports it to the Output Bin. The process starts over and repeats until all blank discs are gone or the number you have specified via software are copied and printed.

Here is a schematic of the process:



Now that you understand the principle and the order of operation, it is time to set up your Duplicator. This is discussed in the next several sections.

B. CHOOSING A GOOD LOCATION

- Place the Duplicator in a location with adequate air circulation to prevent internal heat build up. If you will be attaching an optional printer, you'll need a table-top with at least 30" (76cm) of depth for adequate clearance.
- Do not place the duplicator near heat sources such as radiators or air ducts, or in a place subject to direct sunlight, excessive dust, mechanical vibration or shock.
- Allow for adequate clearance in front of the printer to accommodate the length of the unit with its recorder's CD Tray open. You will also need an area in front of the unit for rejected discs to fall.

C. UNPACKING AND INSPECTION

While unpacking your Duplicator, inspect the carton to ensure that no damage has occurred during shipping. Make sure that all supplied accessories are included with your unit. The following items should be included:

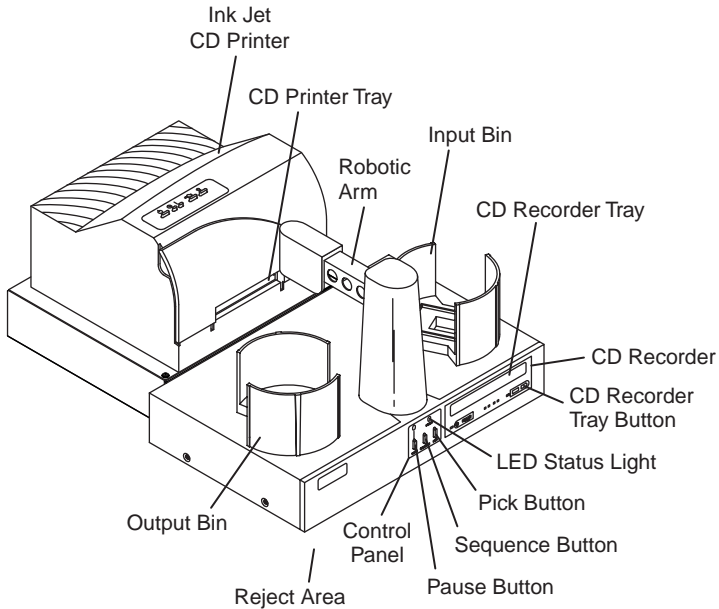
- Duplicator
- Gray Plastic **Input and Output Bins**
- Power Adapter and Power Cord
- **Serial Control Port Cable**
- IEEE 1394 **FireWire** Cable
- Application Software Installer CD-R
- Warranty Statement and Registration Card
- This Operator's Manual, Quick Start Guide and Other Printed Information

Save the carton and packing materials. They will come in handy later if you ever need to transport the Duplicator and/or any of its parts and accessories. Transporting the unit without the proper packaging can cause damage to the robotics.

D. IDENTIFYING THE PARTS

Front Panel and Top

This illustration shows the Duplicator, its Control Panel, Buttons, LED indicator lights, **Input and Output Bins** and other components. An optional **ink-jet CD printer** is shown with the unit so that you can see where it is attached:



The **CD Recorder** is where the Duplicator loads discs as they are copied one-by-one.

The **Robotic Arm** transports discs from the **Input Bin**, to the CD Recorder, to the printer, and finally to the **Output Bin**

The **CD Tray Button** manually opens or closes the CD Tray. In normal operation, the in/out movement of the CD Tray is controlled automatically and this button is not used.

The **Control Panel** contains LED Status Lights and Buttons to manually control operation of the duplicator.

The **LED Status Lights** indicates that Power is ON and when the **Pause Button** has been pressed. They also blink in certain patterns to indicate an error or other condition of the Duplicator. See Section 4 for a full explanation of the LED Status Light conditions.

The **Pause Button** immediately pauses the motion of the Robotic Arm. It is also used in combination with other buttons to perform certain reset and error-clearing operations.

The **Sequence Button** moves the Robotic Arm from one position to the next. It is used mainly during the set-up and testing procedures. It is also used in combination with other buttons to perform certain reset and error-clearing operations.

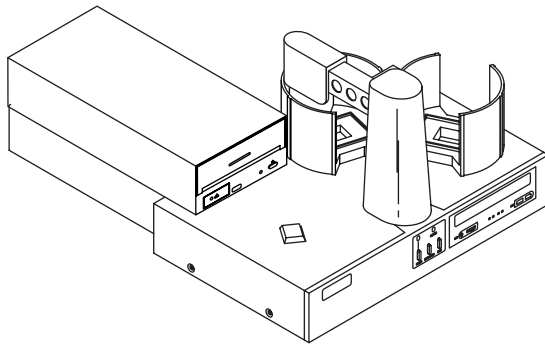
The **Pick Button** is used to manually pick up a disc and to drop it in a Bin, the CD Recorder or the Reject area. It is also used in combination with other buttons.

The **Input Bin** is on the right side of the Duplicator. This is where you stack blank discs which are to be recorded and printed.

The **Output Bin** is where discs are stacked, up to 50 at a time, after they have been recorded and printed by the Duplicator.

The **Reject Area** is where discs are dropped if they do not pass a software verification test. Discs simply drop on the table-top in front of the left front side of your Duplicator. In most cases, rejected discs should be discarded. This is usually indicative of a disc manufacturing problem. If one brand of discs seems to be rejected frequently, you'll probably want to try using a different brand.

For reference, the illustration below shows the optional **Thermal CD Printer** attached to the Duplicator.

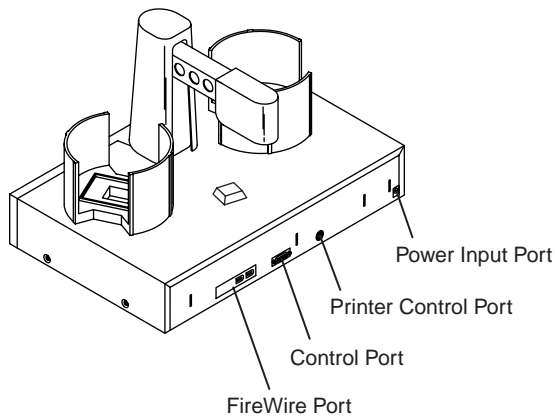


Note that the Thermal CD Printer attaches to the left side of the duplicator and that the Output Bin is located in a different spot due to the location of the Thermal CD Printer. When you first power-up the Duplicator, it will automatically do a search for where the Input and Output Bins are located and from then on will know where to pick and place discs.

When using the **Thermal CD Printer**, you will also need to attach a **Tray Support Bracket** to the top cabinet of the Duplicator. Follow the instructions packed with the optional **Printer Stand** for the Thermal CD Printer.

Rear Panel

This illustration shows the input ports found on the rear panel of the Duplicator:



The **FireWire (IEEE 1394) Port** of the duplicator is for connection to your PC's internal FireWire board.

The **Control Port** is connected to **COM1 (or COM2 or COM3)** of your PC with a **serial cable**, included with your Duplicator.

The **Printer Control Port** is connected to the mini-DIN plug on the rear panel of a **Thermal CD Printer or an Ink-Jet CD Printer** with a mini-DIN cable included with the optional printer stand.

The **Power Input Port** is for connection to the +24V Power Adapter included with your Duplicator.

E. SYSTEM REQUIREMENTS

Before getting started, it is important for you to verify that your PC meets the minimum system requirements. Here's what you need in order to successfully copy discs at 8x or above using the Prassi software:

- 450 MHz or faster processor
- 128MB or greater RAM
- Video display capable of 1024 x 768 pixels
- Free hard drive space of at least 2 GB

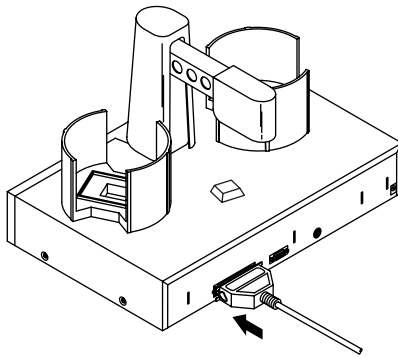
If your PC does not have at least these minimum system requirements, you probably do not want to install the **FireWire/SCSI board** and software on that PC. System performance will more than likely not be acceptable. For example, you may find that your top recording speed will be limited to only 4x. Your Duplicator is capable of much higher performance, so why limit it due to a slow PC?

To print and burn simultaneously, you will need more RAM or a faster processor. The processor should be a Pentium II or III and the RAM should be at least 128mb.

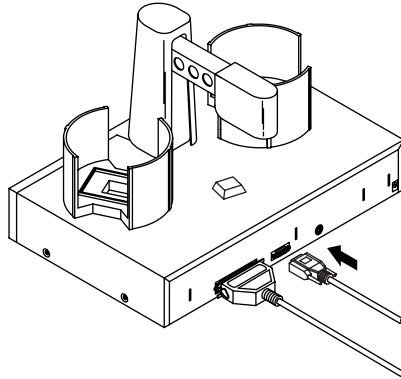
Section 2: Hardware and Software Set-Up and Testing

A. CONNECTING INTERFACE CABLES

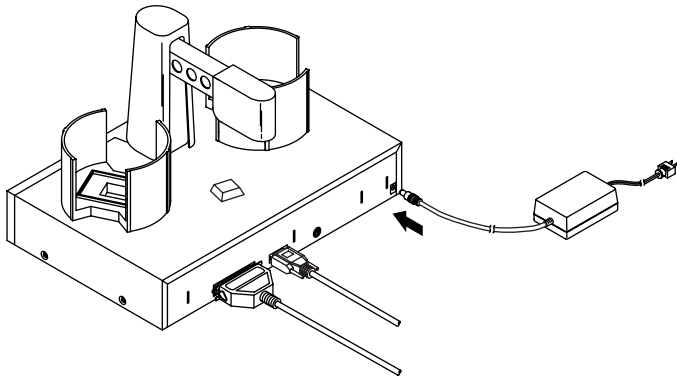
1. Make sure that your PC is turned off and that it is disconnected from its power source. Leave the PC turned off until you are requested to turn it on later in this set-up procedure.
2. Install a compatible **FireWire board** inside your PC. Please refer to the board manufacturer's instructions for the proper installation procedure.
3. Connect the **FireWire cable**. One end is connected to the **FireWire port** on the rear panel of the Duplicator. The other end is connected to the FireWire board's output port on your PC.



4. Connect the Serial Interface cable. One end is connected to the DB9 connector on the rear panel of the Duplicator. The other end is connected to your PC's DB9 COM1 port. If **COM1** is already used for another device, you can use **COM2 or COM3** and follow on-screen instructions later in the set-up procedure for changing the default serial port for the Duplicator.



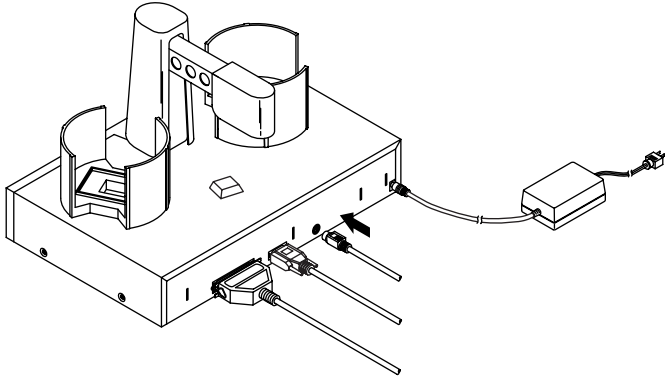
5. Apply power to the Duplicator. One end of the power adapter's cord is attached to the **power input port** on the rear panel of the Duplicator. The other end is connected to a suitable wall outlet. Use of a high quality, commercially available surge suppressor is highly recommended.



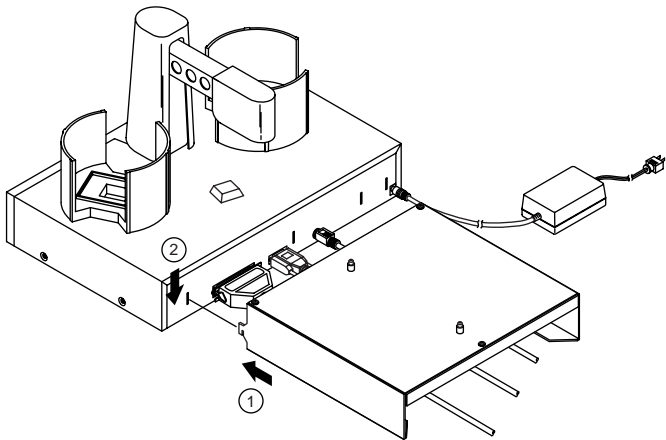
6. If you will be printing as well as duplicating discs, setup the printer according to its instructions and continue on to step 7.

If you won't be attaching a printer, you have now completed the Hardware and Cabling Set-Up procedure. Proceed to Section B.

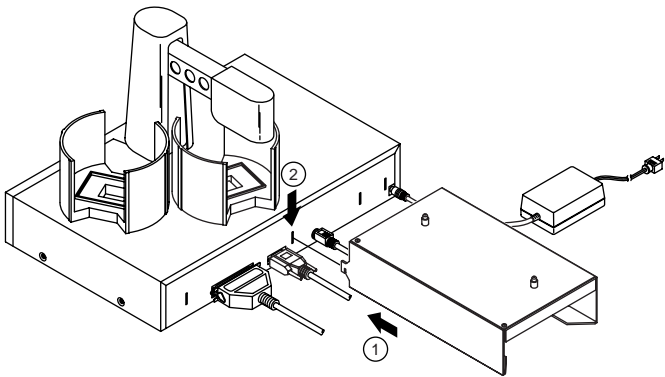
7. Connect the **6-pin mini-DIN cable** (included with the optional Printer Stand) to the **Printer Control Port** on the rear panel of the Duplicator. Do not connect the other end yet. You need to attach the **Printer Stand** and mount the printer first.



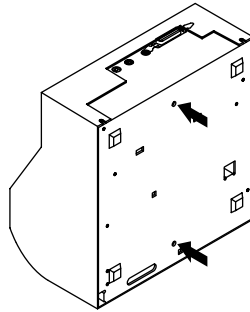
8. Attach the optional printer stand (required for a printer installation) to the Duplicator by locating the connecting tabs and inserting them into the slots on the rear panel of the Duplicator. For the **Ink-Jet CD Printer**, the stand is attached in the center of the Duplicator.



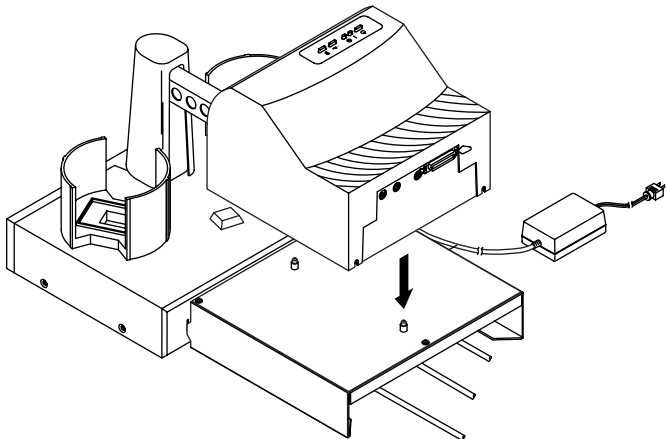
For the **Thermal CD Printer**, the printer is mounted on the left side of the Duplicator.



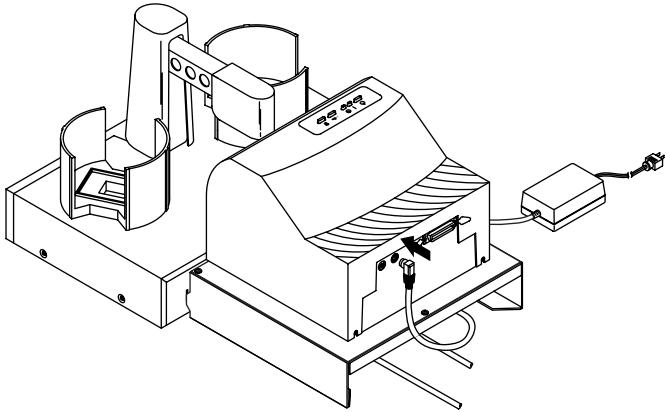
For either printer, find the **locating holes** on the bottom plate of the printer.



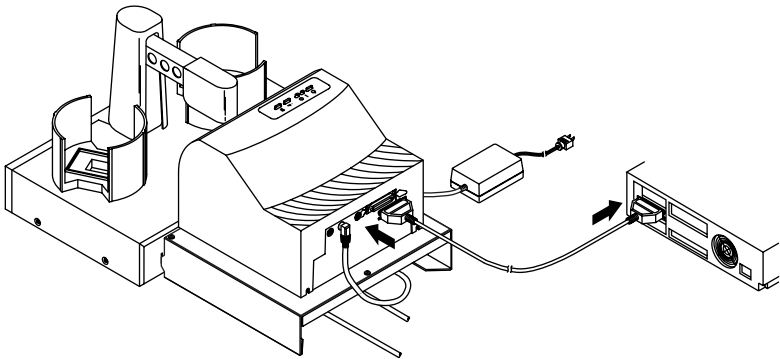
Position the printer on the stand so that the **printer stand** locating pins are inserted into the locating holes of the printer.



9. Connect the other end of the **6-pin mini-DIN cable** to the **Printer Control Port** on the rear panel of the printer.

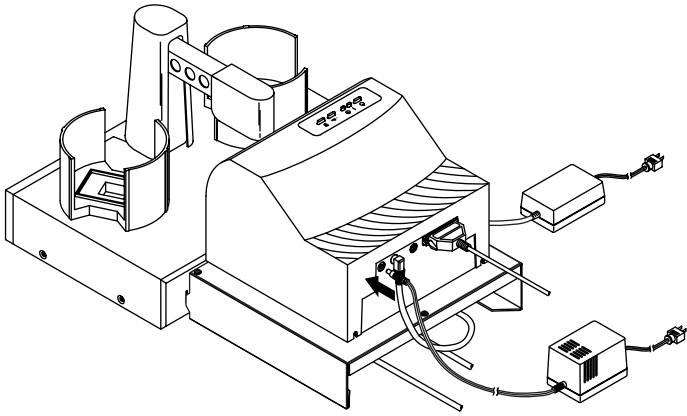


10. Connect the printer with an IEEE 1284 compliant **parallel cable**. One end is connected to the parallel port on the rear panel of the printer. The other end is connected to the parallel port of your PC. Make sure that your PC's parallel port is set to **ECP mode**. If you don't know how to check this or how to change it, refer to set-up section of the printer's Operator's Manual.



11. Make sure that all cables are routed neatly underneath and out the back of the **printer stand** and that no cables are underneath the Duplicator or printer stand feet.

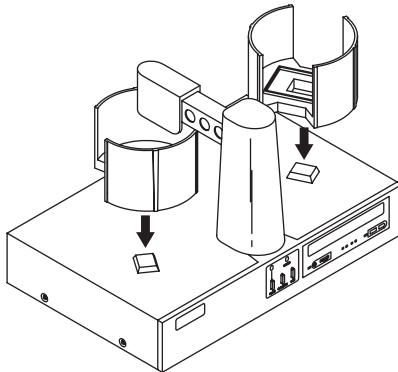
12. Apply power to the printer. One end of the Power Adapter is connected to the printer's rear-panel Power Input Port. The other end is attached to a wall outlet.



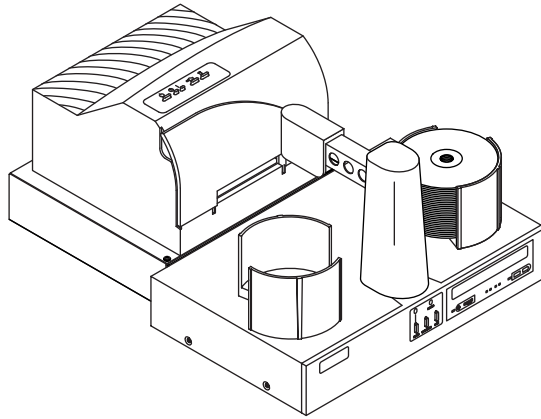
You have now completed the hardware and cabling set-up. Continue on to the **Hardware Test** and Printer Alignment procedures in the next section.

B. HARDWARE TEST AND PRINTER ALIGNMENT

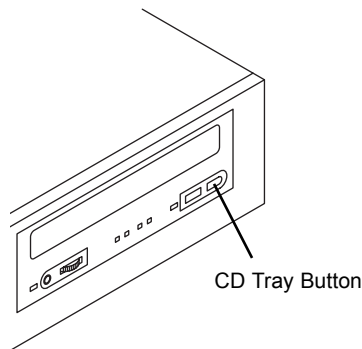
1. Power-up your PC by re-connecting its main power cord. Turn on the PC with its power button.
2. While waiting for Windows to start, perform a Hardware Test as follows:
 - a. Place the gray plastic **Input and Output Bins** on top of the duplicator.



- b. Put a stack of blank CDs in the Input Bin (the one on the right side).

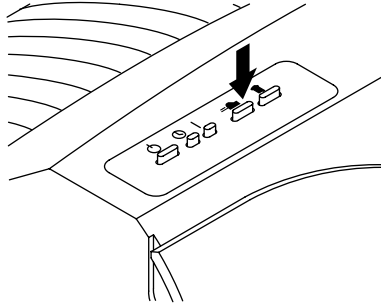


- c. Press the **Sequence button** on the Duplicator's front control panel. The Robotic Arm will swing around to do an initial check to optically detect which printer is installed. It will then go to a position directly above the Input Bin.
- d. Press the **Pick button** on the control panel. The robotic arm will pick up a disc.
- e. Open the CD-R Recorder's CD Tray with the **CD Tray button**.



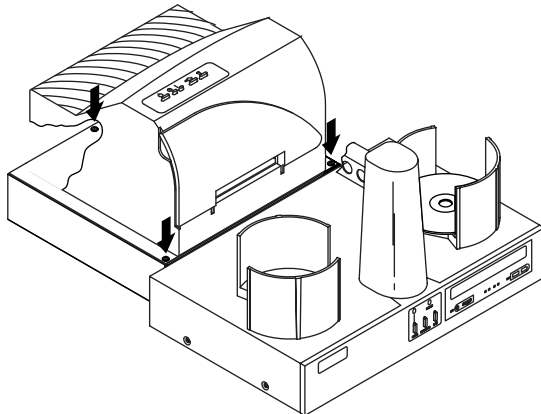
- f. Press the Sequence button.
- g. Press the Pick button. The CD will be placed into the CD Tray.
- h. Press the Pick button again. The CD will be lifted out of the CD Tray.

- i. Open the printer tray with the disc in/out button. On the **Ink-Jet CD Printer**, this is the button with the two arrows pointing different directions. On the **Thermal CD Printer**, this is the button on the lower right side of the front panel.



- j. Press the **Sequence button**.
- k. Press the **Pick button**. The CD will drop into the printer's tray.

If it does not drop perfectly into place, you will need to adjust the **printer stand's** Mounting Plate. This is accomplished by loosening the three Phillips-head adjusting screws and moving the printer slightly in one direction or another until the disc is dropped perfectly into the printer's tray. You can repeatedly press the Pick button to test your alignment. Or, press and hold the Pick button for 5 seconds, then release it, and the disc will be positioned about 5 mm above the tray for easy visual alignment. When the alignment is correct, tighten down the screws securely.



Check one more time for printer alignment after the screws have been tightened down, just in case something changed while you were making the adjustment. Re-align if necessary.

- l. Press the **Sequence button**.
- m. Press the **Pick button**. The CD will drop into the Output Bin.
- n. Press the Pick button again. The CD will be picked up out of the Output Bin.
- o. Press the Sequence button several times until the CD is transported back above the Input Bin.
- p. Press the Pick button. The CD will drop into the Input Bin.

C. FINE TUNING THE **PRINTER STAND ALIGNMENT**

If you find that some discs are not being held tightly in the printer tray and start to move inside the printer while printing, the printer stand may need further alignment. If the discs are not placed in the exact center of the Printer Tray, it is possible you will encounter failed picks or poor print quality. There is a special Fine Tune Alignment built in to the program of the Duplicator to ensure proper picks. To perform this alignment, follow these steps:

1. Open the Printer Tray by pressing the Printer Tray Button on the top of the Printer Control Panel.
2. Loosen the three Printer Stand Adjustment Screws shown. Press the Sequence Button on the front of the Duplicator until the Robotic Arm is positioned over the Input Bin.
3. Press and hold the Pick Button on the Duplicator's Front Control Panel for 5 seconds. You will see the LEDs on the front of the Duplicator toggle back and forth.
4. Immediately press the Pause Button to enter the Fine Tune Mode.
5. Next, press the Duplicator's Pick Button to perform the Printer Tray Fine Tune Alignment. The Robotic Arm will move to the printer position and hover just above the Printer Tray.

6. With the Robotic Arm holding a disc just over the tray, move the printer around until aligned as close as possible. For a more accurate alignment, press the **Sequence Button** to step the arm slightly to the right (clockwise), or press the Pause Button to step the arm slightly to the left (counter-clockwise).
7. With the printer aligned, tighten the three Printer Stand Adjustment Screws.
8. Press the **Pick Button** to exit the Fine Tune Mode.
9. Test your alignment by pressing the Pick Button repeatedly to pick and place a disc into the tray.

You have now completed the **Hardware Test** and Printer Alignment. Continue on to the Software Installation.

D. SOFTWARE INSTALLATION

Once you have properly set up your Duplicator and optional CD printer, the next step is to install the appropriate software on your PC that you'll need for duplicating and printing.

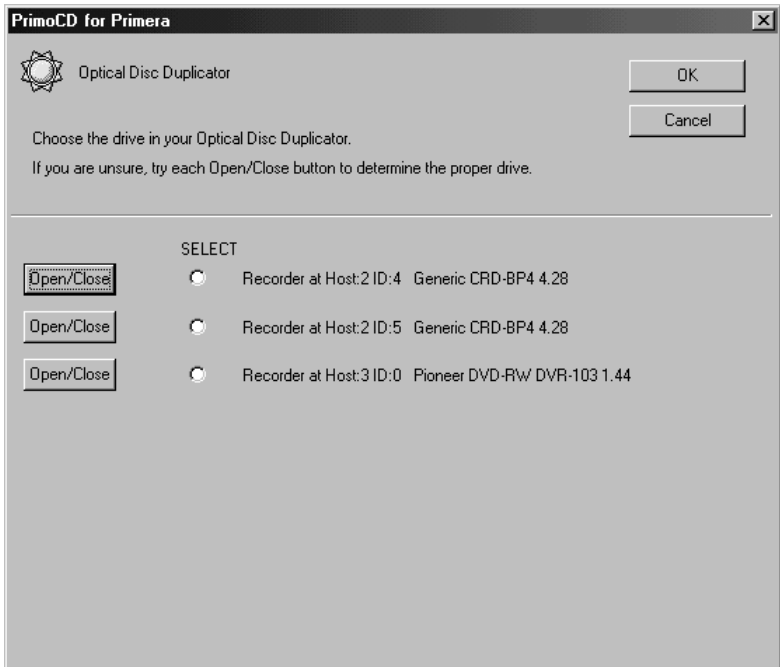
There are two software programs to install: (1) the **printer driver software**, and (2) the CD duplicating application software called Prassi PrimoDVD Pro 2.0. Install the two software programs as follows:

1. Install the printer driver software according to the instructions in that unit's Operator's Manual.
2. Install PrimoDVD Pro 2.0 software as follows:
 - a. Close down all other software applications.
 - b. Insert the included CD into your computer's CD-ROM drive. In most computers the software will auto-boot. If it does, proceed to Step 3 below. If it does not, follow these steps:
 - Double click on **My Computer**
 - Double click on your CD-ROM drive containing the installation disc
 - Click **Install Prassi PrimoCD Pro** (or Prassi DVD Pro)
3. The Prassi Welcome Screen is now displayed. Press **Next**.
4. The license agreement screen is displayed. After reading it, press **Yes** to continue or **No** to leave the program.

5. Assuming that you pressed Yes, the next screen shows the Destination Location. If you wish to install the program in a different location, press **Browse**. If not, press **Next**.
6. The **Show Program Folder** screen is displayed. If you wish to change the name of the folder in which the software will be installed, do so now. If not, press **Next**.
7. The installation progress will be displayed. When the program is completely installed, you will see **Set Up Complete**. Press **Finish**.
8. Re-boot your computer before you proceed.

E. SELECTING YOUR RECORDER DRIVE

If your PC has one or more recording drives in addition the drive in your Duplicator, the following window will be seen each time Prassi Primo CD Pro is launched:

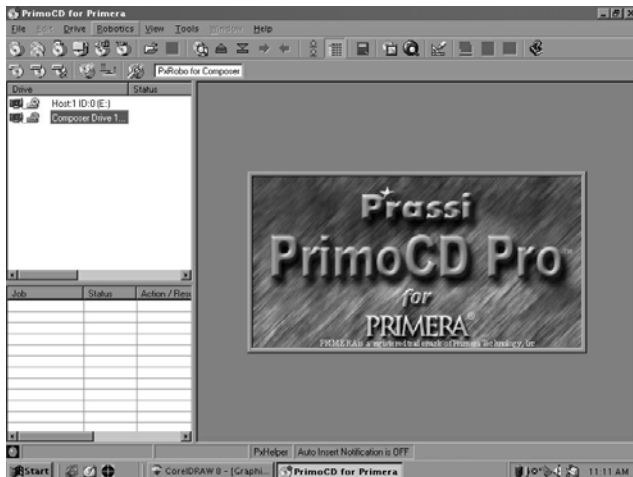


This dialogue box will allow Prassi to identify the drive in your Duplicator. Each recording drive installed on your system will be listed in this dialogue box. Click each **Open/Close** button to open the recorder drive, then click the appropriate **SELECT** radio button for the drive installed in your Duplicator.

F. SOFTWARE TEST

The final set-up step before starting your first job is to test the entire hardware/software configuration. This will confirm that the hardware, software and your PC are all communicating properly with each other properly. Follow this procedure:

1. Launch the Prassi software from your Windows Desktop or program menu. The main Application Window will appear. Single click on the Duplicator drive in the list of available drives on the lefthand side of the screen to highlight it.
2. From the main **Application Window**, click on Robotics.



3. In the drop-down menu, go to Services.



4. Click on Check Communications. You will get a dialog box saying "Communication OK. System Idle." If you don't, check that all cables are connected securely. Or, change the **serial cable** from **COM1** on your PC to **COM2** or **COM3** and change the setting in the **Control Port** drop down menu. Try again until you get the "Communication OK" message.



5. Click OK to get back to the main screen.

- Click on Robotics again.



- Select Manual Movements.



8. Deselect any components you don't have installed in the check boxes in Multiple System Test.



9. Load at least 4-5 discs into the Input Bin.
10. Click on Start Test. The robotic arm will move through its entire sequence automatically. If you specified more than one disc, it will continue until the number you specified is completed or it runs out of discs.



Congratulations! You have now completed the installation process and your Duplicator is ready for operation.

NOTE: *Prassi Primo PrimoDVD Pro 2.0 software is for use only with Windows 98SE, Windows 2000, or Windows XP. A Macintosh version is not available.*

*The next section of this Operator's Manual will guide you through a simple audio disc copy procedure. For information on performing more advanced copying jobs or to learn how to copy Video CDs, data discs and other formats, consult the separate Prassi PrimoDVD Pro 2.0 Operator's Guide included with your Duplicator. An excellent on-line Help file is also available from within the Prassi software as well as from the **printer driver software**.*

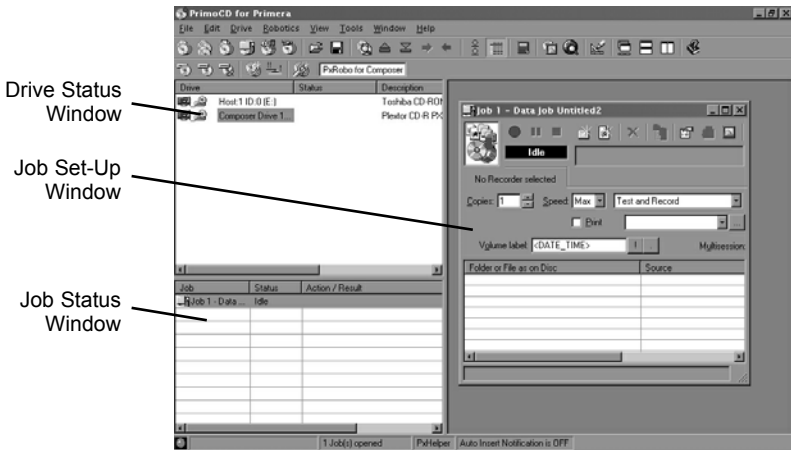
Section 3: Running Your First Job

Now that you've completed the hardware set-up, connected all cables, loaded the Prassi PrimoDVD Pro 2.0 Software and the printer driver and performed all tests, you're ready to copy discs.

The example given in this chapter is for a simple **audio CD copying job** using Prassi PrimoDVD Pro 2.0 software. Please refer to the excellent Prassi Software User's Guide for instructions on performing other types of copying jobs. There is also on-line help available from the Prassi software's Help screens.

A. OPERATING SCREENS

To keep things simple, there is really only one main operating screen you'll need to know about in order to run the Prassi Software. It is called the **Application Window** and it looks like this:



Under this window there are several adjustable-size windows that indicate what you've setup and what's happening: the **Drive Status Window**, the **Job Status Window**, and the **Job Setup Window**. A sub-Window called the **Activity Log** is also available, but it is hidden upon initial boot-up of the software. Here's a short explanation of each Window:

- **Drive Status Window.** Lists all of the drives installed in the system. Your configuration has just two drives: the internal drive in your PC and the CD Recorder installed in your Duplicator.

- **Job Set-Up Window.** This is the space where the Job Setup Panel for each job is displayed. When you select a job by clicking on File: New from the File pull-down menu, a different type of Job Panel will appear in the Job Set-Up Window depending upon the type of job selected. Each Job Panel contains all of the necessary information to run that job, including source file name, number of copies to make, etc. In addition, the Job Panels reports status information during the running of the job.
- **Job Status Window.** As each Job Panel is formed, an entry is made in the Job Status Window at the lower left side of the main **Application Window**. When jobs are started, this list displays the status of each job, including the number of discs copied and the number remaining. This window may be hidden by clicking on the Show Job List Panel under the View menu.

One other sub-window available is called the **Activity Log Panel**. It records all user actions and system responses during the recording process by time of occurrence. If a problem occurs while you're not present in front of the computer, you can browse the log to find out details that may no longer be present on the main screen. Control of the Activity Log is under View: Activity Log. The log may be saved (this happens automatically every time you exit the software). Emptying the log will delete the entire log.

B. OVERVIEW OF RECORDING

Three basic recording operations are available: (1) actual recording, (2) test recording, and (3) verifying.

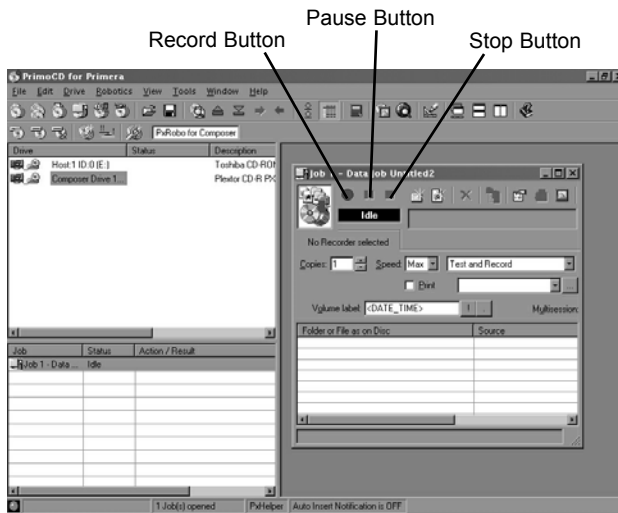
Actual recording is self-explanatory. Discs will be recorded without any testing or verifying beforehand. If you have used the Duplicator successfully before with a particular brand of media that is highly reliable, you may choose to record without testing or verifying. This will deliver the highest throughput rate of finished discs.

Test recording performs all of the operations of recording with the drive's laser turned on to reading power. A test recording run will determine if the data source will keep up with the recorder's demand. Normally, a single test run is sufficient to determine if a condition known as "buffer underrun" will occur. If a buffer underrun occurs during recording, all the discs that are run through your CD Recorder will be wasted! So, a quick

test recording is highly recommended before starting a job and walking away.

Verifying will compare the data of the recorded CD-R with the original information. This takes extra time but ensures that the recorded CD-R is an exact match.

After your job(s) have been set up, each one may be started by clicking on the red **Record Button** at the top of the Job Setup Panel. Here's what the Job Setup Panel looks like:



While jobs are running, they may be paused or stopped by clicking on the appropriate buttons on the Job Setup Panel.

The **Pause Button** will allow the current recording to finish, then suspends operations on that job. Recording is resumed by clicking the Pause Button again.

The **Stop Button** will abort any recording in progress and cause the Duplicator to transport the disc to the **Reject Area**. It will also terminate that job.

Record, Stop and Pause actions for the currently-selected (highlighted) job may also be selected from the Toolbar at the top of the main Application Screen.

C. COPYING AN AUDIO CD

Now, you're ready to start an actual recording job. In this example, we'll perform a simple audio disc copy. More detailed information regarding other types of jobs (data discs, Video CD, etc.) can be found in the Prassi User's Guide and in the Help files included on the main Application Screen Toolbar.

Follow these steps to set-up and perform an audio CD copy job:

1. Launch the PrimoDVD Pro 2.0 Software from your Windows Desktop or program files.
2. Insert the master disc into your PC's CD drive. In the drive list, right-click on the Host Drive and select "**Disc Explorer and Drive Properties.**"
3. The Disc Explorer Window will be displayed. Check in the Disc Explorer that the source disc is correctly read. (Click on the **Force Refresh Button** if the Auto Refresh checkbox is not checked).
4. Press the big **Global-Image** button. In the panel that appears at the bottom of the Disc Explorer enter the file name that will contain the disc image (uses a .GI extension). Then press Build.

Please note that this method of building a disc image creates a saved file on your computer's hard drive. These files can get huge - up to 650MB each. You may want to create only a temporary image that is automatically deleted after your copy job is done.

To do this instead, build your job image file using the Disc-to-Disc option from the main File: New Job drop-down menu. Be sure to click the checkbox that reads Make a Temporary Image on the Hard Disc and Copy From There. The job will build automatically, make the number of copies you've specified, and delete the disc image afterwards.

5. Wait until the image is completely built and then close the Disc Explorer dialog.
6. From the Menu bar, select **File: New Job** or **New Global-Image** or **Other Image Job**. A Job Window will now open in the right side of the application.

7. In the **Image Job** dialog box, enter the name of the .GI file you just created into the Image field name. A drop-down box will contain all the recent images you created and you can easily select from this list if you choose.
8. Also in the **Image Job** dialog box, check the box labeled **Print** if you have a printer installed and wish to print a print image onto each disc after it has been recorded. There are two types of files supported: (1) .prn files you've previously created using almost any Windows graphics application, or (2) .pxf files that have been created with the built-in **Disc Face Editor** software. Both graphics file types and how to create them are explained in Section D.

NOTE: *It is highly recommended that you use PRN files for printing as opposed to PXF files. PXF files may not print properly. PRN files are the recommended way for printing on any operating system.*

In the drop down box to the right of the Print checkbox, you can select any recently used .pxf or .prn files. Or, click the ... box next to the print dialog box to browse for saved **.pxf or .prn files**. Find the file you wish to print, highlight it, and click Open. Or, double-click on it. The file appears in the Image Job Window print dialog box with its path.

9. In the **Drive List**, highlight the recorder icon. This is where the software will send the job for recording. Right click on the icon and select **Select/Deselect** as Recorder.
10. In the **Image Job** dialog box, set the number of copies, the speed (if you select a speed that the recorder does not support, it will default to the immediate lower one), and the action you desire: Test, Test and Record, Record, Verify and Record, etc.
11. Press the red **Record** button to start recording your copies.
12. If everything worked right, the Duplicator should now be recording and printing your discs.

D. CREATING PRINT FILES

Two **types of print files** are supported in PrimoDVD Pro 2.0: (1) .prn files and (2) .pxf files. Each are explained below.

1. **.PRN files.** First and foremost a *.prn file is created by printing, it is not saved in the conventional manner. The *.prn has all of the driver properties built into the file at the time of creation. Once this file is created it can not be changed. Example: If a print file was created with the cartridge type set to color, you can only print using color. If you change to a monochrome cartridge the *.prn will not work.

Print files can be created from any Window's based graphics application. Most applications have a check box in the print window for printing to file. If this is the case run your print to the printer to make sure that all settings are correct. Once you are to the point of making the print file just select print then in the print window select the Print to File checkbox. A window will pop up prompting you for a file name and location for the file to be saved in.

If your application does not have a print to file option then you must change the printing mode under the printer properties. Right click the printer icon from the printers folder and select properties. Next if using Windows 95/98/ME select the details tab. Under the setting Print to the Following Port change it from LPT1 to File (this is an option just select the drop down arrow). If using Windows NT/2000 select the ports tab and select the File option. Which ever system you have any time you try to print using that driver you will be prompted for a file name and location. This will create a *.prn file.

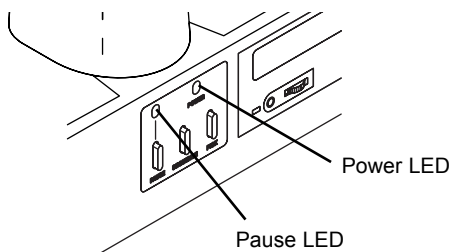
Note: *When creating print files make sure that the 32 Bit Spooler and Direct to Port options under printer properties are not checked. You will encounter problems if they are checked.*

2. **.PXF files.** These are created using the Prassi Disc Face Editor software that is built-into the Prassi PrimoDVD Pro 2.0.

To use **Disc Face Editor**, go to Tools, Disc Face Editor. The program launches. Full instructions for its use are in the Prassi User's Guide. Once you have created your image, store it in a directory where you can later find it when you need to call it from your Image Job window.

Section 4: Interpreting the Duplicator's LED Status Lights

The **LED Status Lights** are located on the front Control Panel. They can tell you a lot about what is happening at any given moment with the Duplicator, including a number of error conditions. To accurately interpret what is meant when the lights are on, off, or flashing, please refer to the following chart:



A. POWER LED

Status	Condition
Off	No Power. Plug in Power Adapter.
On Solid	Power is ON. This is the Duplicator's normal "waiting" mode.
Flashing	Power is ON, but an error condition exists: a. Didn't pick up a disc b. Dropped a disc c. Discs out d. Robotic arm stalled; probably hit something while moving. Press any button on Control Panel to re-try.

B. PAUSE LED

Status	Condition
Off	Normal "waiting" mode
On Solid	Duplicator is paused.
Flashing	Duplicator is busy; i.e. motors are running, printer is printing, etc.

Section 5: **Maintenance and Troubleshooting**

The Duplicator is designed to operate for extended periods of time with very little attention. In fact, no regular maintenance is recommended other than cleaning the outside case.

NOTE: *Do NOT attempt to oil or grease the Duplicator's Robotic Arm shaft or other components. You will likely cause more harm than good! Any moving parts are designed to be run for the life of the machine with no additional lubrication required.*

A. CLEANING THE CASE

Use a clean, white rag with a small amount of water or isopropyl alcohol to clean the Duplicator and printer's outside cases and CD trays. Stronger cleaning solutions are NOT recommended because they may damage the paint and plastic materials from which the parts are manufactured.

Always disconnect your Duplicator and printer's power cords before cleaning. Resume operation only after the surfaces are completely dry.

B. RESETTING THE DUPLICATOR

If you find yourself in a situation where the Duplicator is not responding properly, you may need to do a system reset. A typical cause may be when you stop a job out of sequence. To do so, press the **Pause and Pick buttons** at the same time.

Do NOT be tempted to simply unplug the Duplicator's power cord. This will shut down the Duplicator's internal SCSI CD-R drive and force you to completely restart the PC to re-initialize the drive.

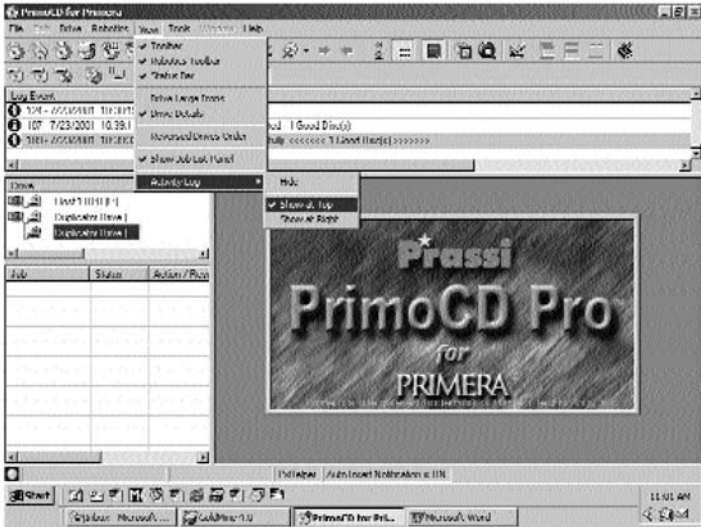
C. SCSI POWER-DOWN PROCEDURE

As you may know, SCSI is a very finicky interface. You can not simply unplug cables or power-down out of sequence since drive locations will be lost, PCs can freeze-up, and other nasty things can happen. To power down, always shut down your PC first, then unplug the Duplicator.

Use the opposite procedure for power-up. Always start the Duplicator first, then turn on your PC.

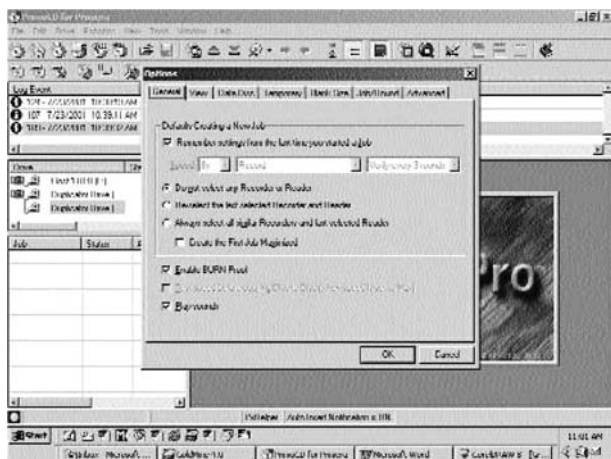
D. RECORDING ERRORS

If discs are not being recorded properly or are not passing verification, you will want to consult the error log. This is available in Prassi by clicking **View, Activity Log** then selecting the option to **Show at Top** or **Show at Right** from the drop-down menu.

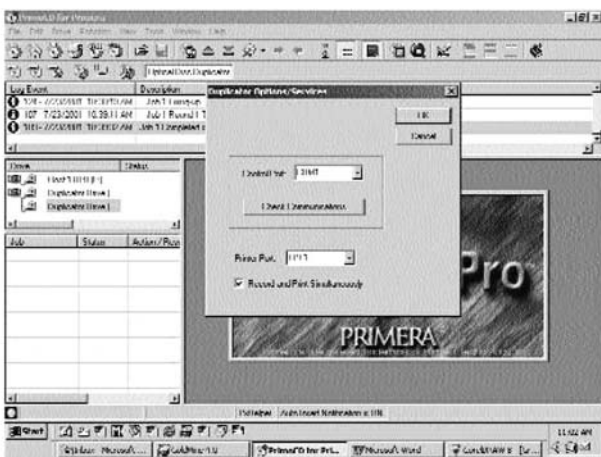


This will show a history of tasks performed by Prassi. If there are errors, you will see them in this list. For more information on recording errors, you can consult the Prassi manual included with the Duplicator. The most common error is Buffer Underrun. This occurs when data can not be sent fast enough to keep up with the recording drive. The following suggestions are very useful in eliminating buffer underrun errors:

- a. Click **Tools, Options** and check the box labeled **Enable Burn Proof**. This option enables the drive to slow down its recording speed to match the data.



- b. Click **Robotics, Options** and deselect **Record and Print Simultaneously**. This will cause your jobs to take longer, but will free more computer resources for recording.



- c. Examine the type of recording job you are attempting. If you are attempting to record directly from a CD Reader to the Duplicator, the reader or the bus inside your computer may not be able to keep up with recording at 16x speed. Try creating a global image (GI) of the disc as described earlier in this manual and you will most likely have greater success.

E. TECHNICAL SUPPORT

If you have difficulties in operating your Duplicator, the procedures in this manual and the Prassi software User's Guide should, in most cases, solve the problem. If you still have difficulty, contact the technical support number listed on the insert included in the supply pack that came with your Duplicator.

Section 6: **Technical Specifications**

Model	Optical Disc Duplicator
Configurations	<u>CD-R System</u> : One CD-R recorder, Prassi PrimoCD Pro Software, Robotic Transport Station <u>DVD-R System</u> : One DVD-R recorder, Prassi PrimoDVD and PrimoCD Software, Robotic Transport Station <u>Print-Only System</u> : (Printer Autoloader): Robotic Transport Station only; controlled by Ink-Jet CD Printer or Thermal CD Printer
Optional Printers	Ink-Jet CD Printer or Thermal CD Printer
Minimum System	Pentium® II/III Processor (or equivalent) at 450 Mhz or higher, 128MB RAM, available PCI slot, SCSI controller card (Advansys ASB3940UA or compatible), one free serial port, one free parallel printer port
Disc Capacity	<u>Optical Disc Duplicator</u> 50 disc input, 50 disc output <u>Optical Disc Duplicator Plus</u> 100 disc input, 100 disc output
Recordable Formats	<u>CD-R</u> : CD-Audio (CD-DA), CD-ROM, CD-I, Video-CD, MP3 to CD-Audio (on the fly, no hard drive overhead required) <u>Pioneer AO3 General Purpose DVD-R</u> : DVD-R <i>Writes</i> : DVD-R (4.7 General Only) DVD-RW, CD-R, CD-RW <i>Reads</i> : DVD-ROM DVD-R (all types), DVD-RW, CD ROM, CD TEXT, Photo CD, CD-DA, CD Extra

Operating Systems	Windows 98SE/XP/2000
Interface	Control: PC serial port Printing: PC parallel port Image data: IEEE1394 FireWire (16x CD-R) SCSI
Power Requirement	100-240 VAC, 50/60 Hz, 60 watts
Weight	12.5 lbs. (5.67 kg)
Dimensions	16.625"W x 10"H x 10.125"D (422mmW x 254mmH x 257mmD)
Certifications	Emissions: FCC Class B, CE Safety: TUV-GS, cTUVus, CE
Warranty	One year return-to-depot

Index

Application Window	22, 27, 28
Audio Job, Running	27
Bins	
Input	6, 7, 8, 16
Output	6, 7, 8, 16
Buttons	
CD Tray	7, 17
Pause	7, 8, 29
Pick	8, 17, 19, 20, 34
Sequence	8, 17, 19, 20
Cables	
6-Pin mini DIN	13, 15
Serial	6, 9, 23
Connections, Rear Panel	9
Controls, Front Panel	7
Disc Face Editor	31, 32
FireWire	6, 9, 10, 11, 39
Hardware Test	16, 20
Identifying the Parts	7
LED Status Lights	7, 33
Locating Holes, Printer	14
Location	6
Maintenance	34
Overview of Operation	2
Overview of Recording	28
Parallel Interface	
Cable	11, 15
ECP Mode	15
Ports	
COM1, COM2, COM3	9, 12, 23
Control	9, 23
Printer Control	9, 13, 15
Power Input	9, 12

PrimoCD Pro Software	
Activity Log	27, 28
Application Window	22, 28
Drive Status Window	27
Job Status Window	27, 28
Job Set-Up Window	27, 28
Print Files	
Creating	32
Types	32
Printer Driver Software	20, 26
Printers	
Ink-Jet	1, 4, 7, 9, 13, 38
Thermal	1, 4, 8, 9, 14, 38
PRN Files	31, 32
PXF Files	31, 32
Reject Area	3, 8, 29
Resetting the Duplicator	34
Selecting Drive	21
Software	
Installation	20
Operating Screens	27
Testing	22
Specifications	38
Stands, Printer	9, 13, 14, 15, 19
System Requirements	10
Technical Support	37
Tray Support Bracket	9
Troubleshooting	34
Unpacking	6

