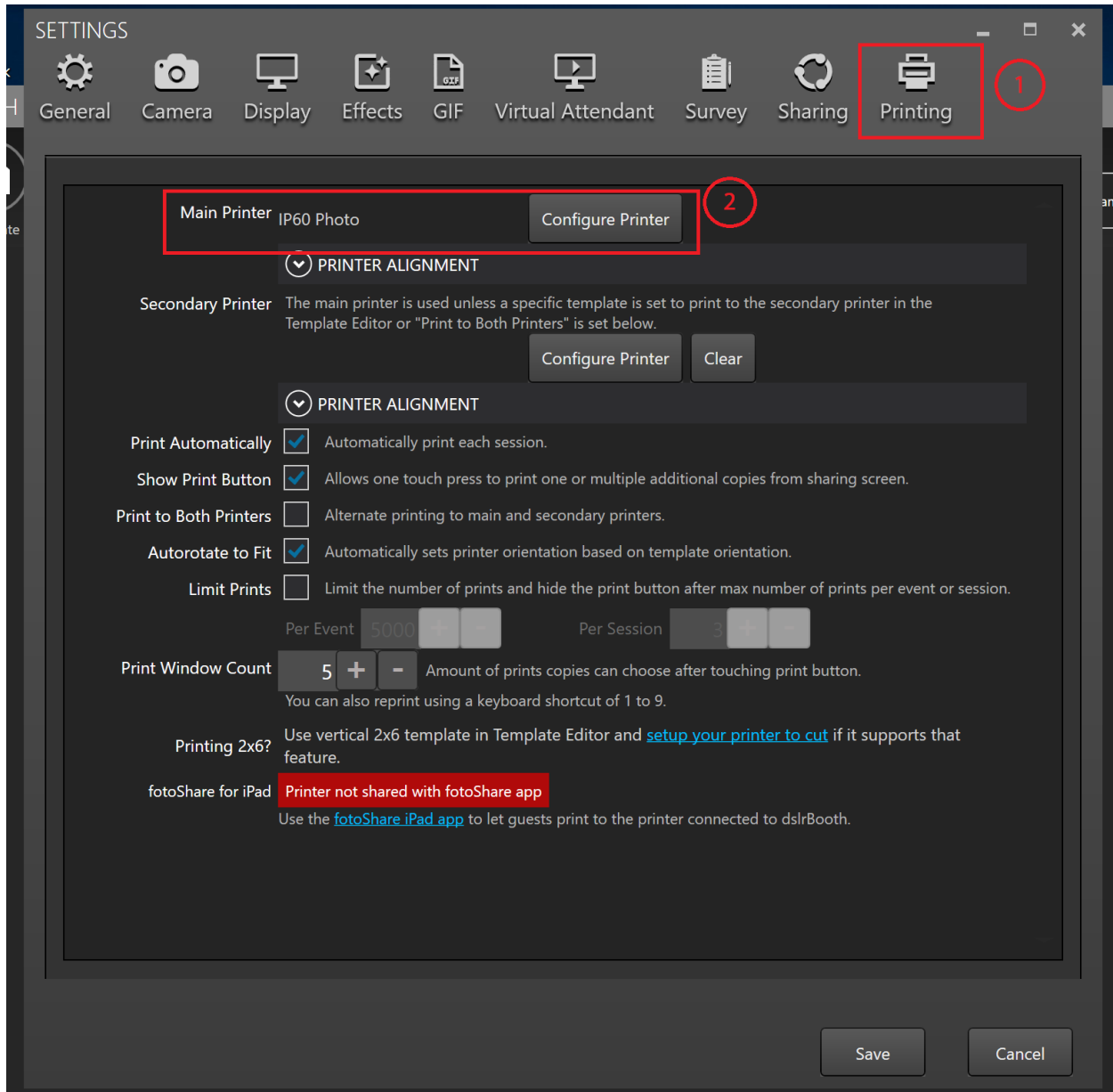
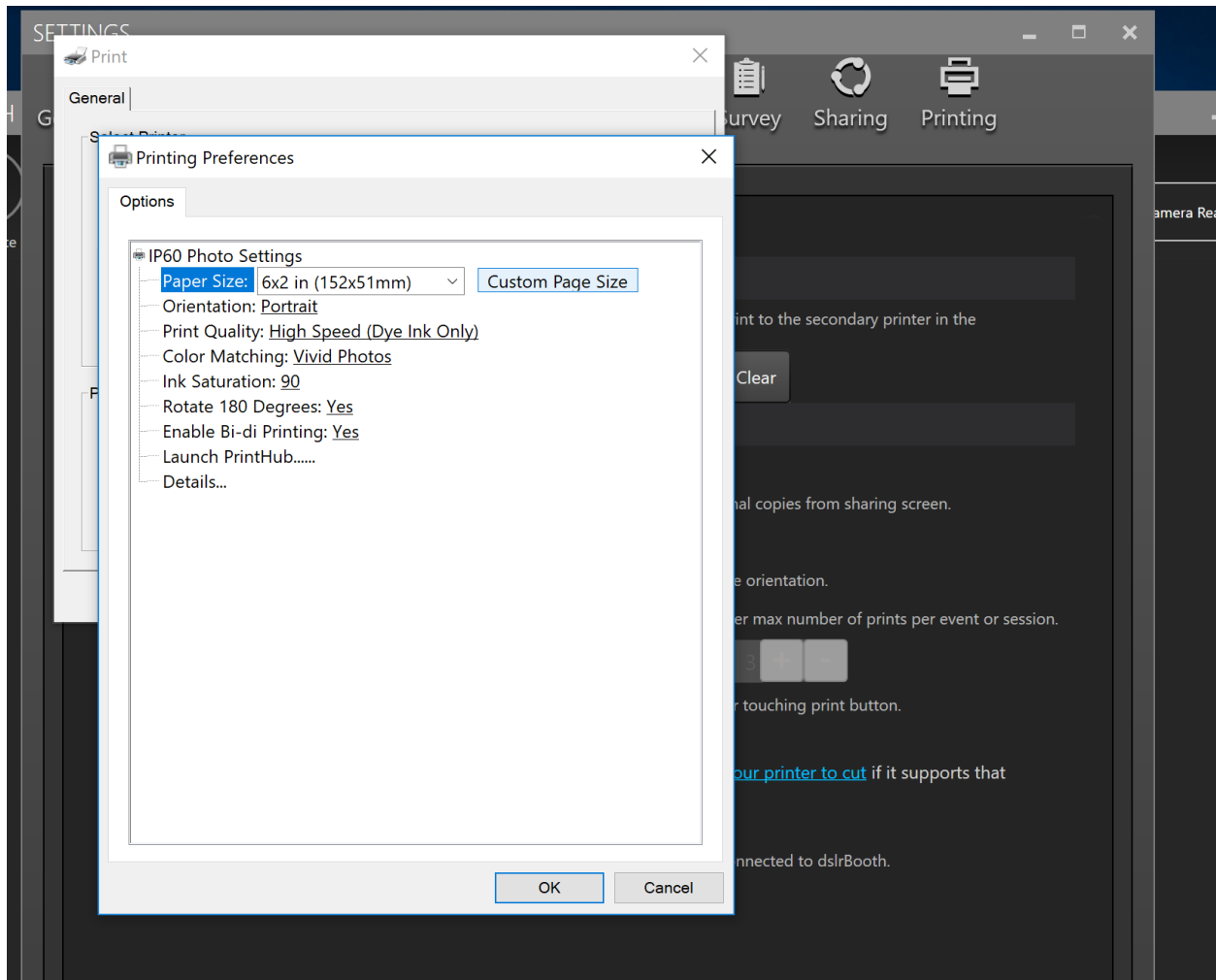


How to setup and print single 2x6 photo strips in DSLRBooth (Professional Edition Required)

Launch DSLRBooth and choose the Settings button at the top. In the Settings menu choose Printing (1). Next under Main Printer (2) click Configure Printer to choose the IP60 as your printer.



Click the check box next to the IP60 and then choose the Preferences button below. Choose 6x2 as your paper size as well as any quality or color settings you want to change.



Click OK to save and then Print to accept on the previous screen. Click Save on the Settings menu to return to the main screen.

From the main screen click the Template button (2nd after Settings) to open the template editor. Choose 2x6 in the Paper Size menu in the lower left. Create or arrange the template as you'd like and when you're ready to use, click the Open Photo Booth button in the upper right corner

New Template Save as New Import Export Print Test Copy Delete Template Shop Templates Undo Redo

Open Photo Booth

ADD

- Image
- Photo from Booth
- Text
- Session Data
- Shape
- QR Code
- Background Color

LAYOUT

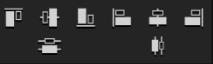
- View Dimensions In: Inches
- Paper Size: 2 x 6**
- Print to Secondary Printer
- Resolution: 600 dpi
- Orientation: Horizontal



INFO

Position: X 0.88 Y 0.5
Size: W 1.5 H 1
 Keep aspect ratio
Rotate: 270°

ALIGN & DISTRIBUTE



LAYERS

- married-couple
- Photo 4
- Photo 3
- Photo 2
- Photo 1

OPTIONS

Photo #: 1
Stroke Color: [Color Picker]
Stroke Width: 0px